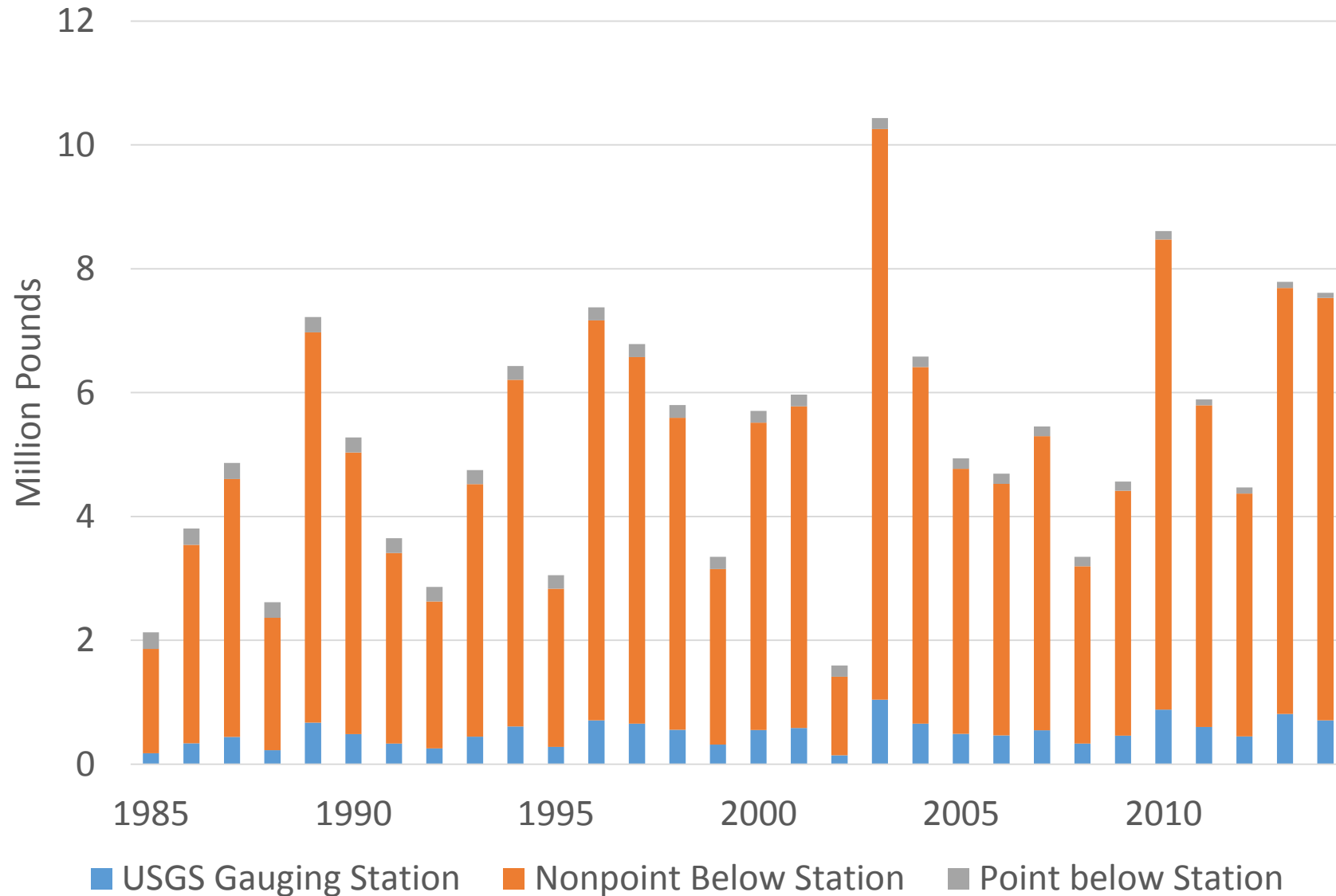


What are the Nutrient and Sediment Loads Coming from the Choptank River's Watershed?

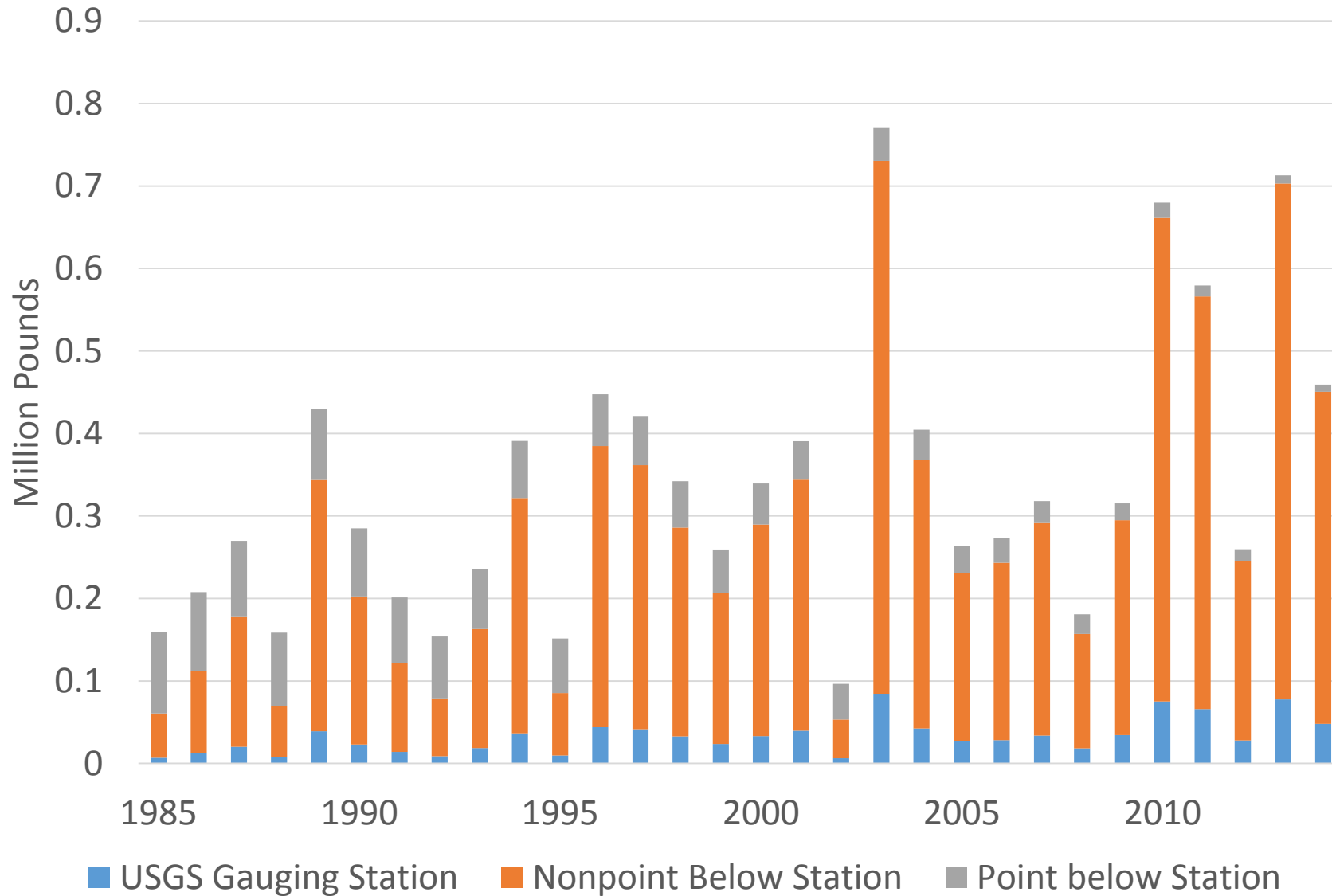
Answers from the Chesapeake Bay Program Partnership's Models and Monitoring Networks

Rich Batiuk
Associate Director for Science, Analysis and Implementation
Chesapeake Bay Program Office
U.S. Environmental Protection Agency
Annapolis, Maryland

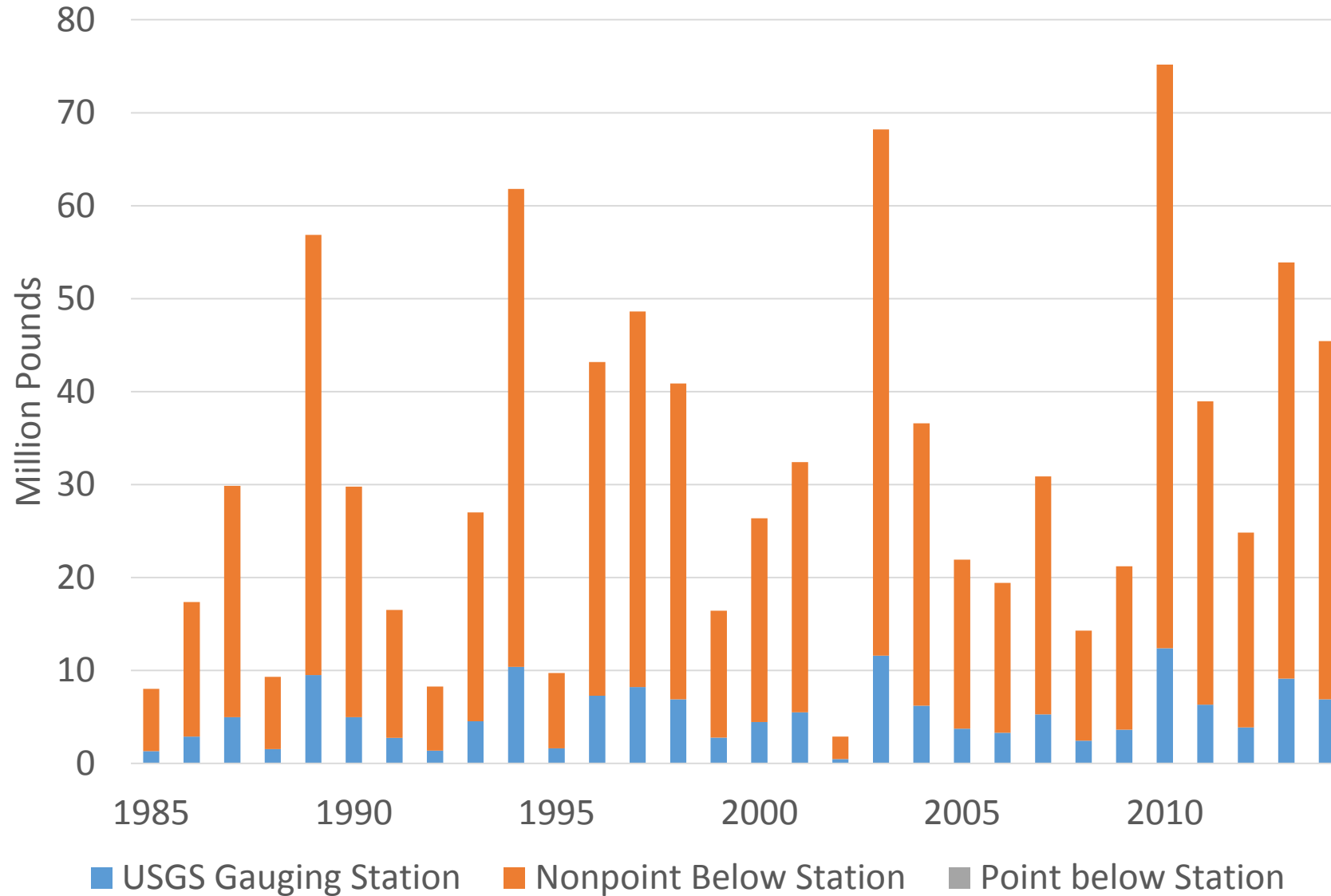
Choptank River Watershed Estimated and Monitored Annual Nitrogen Loading Trends



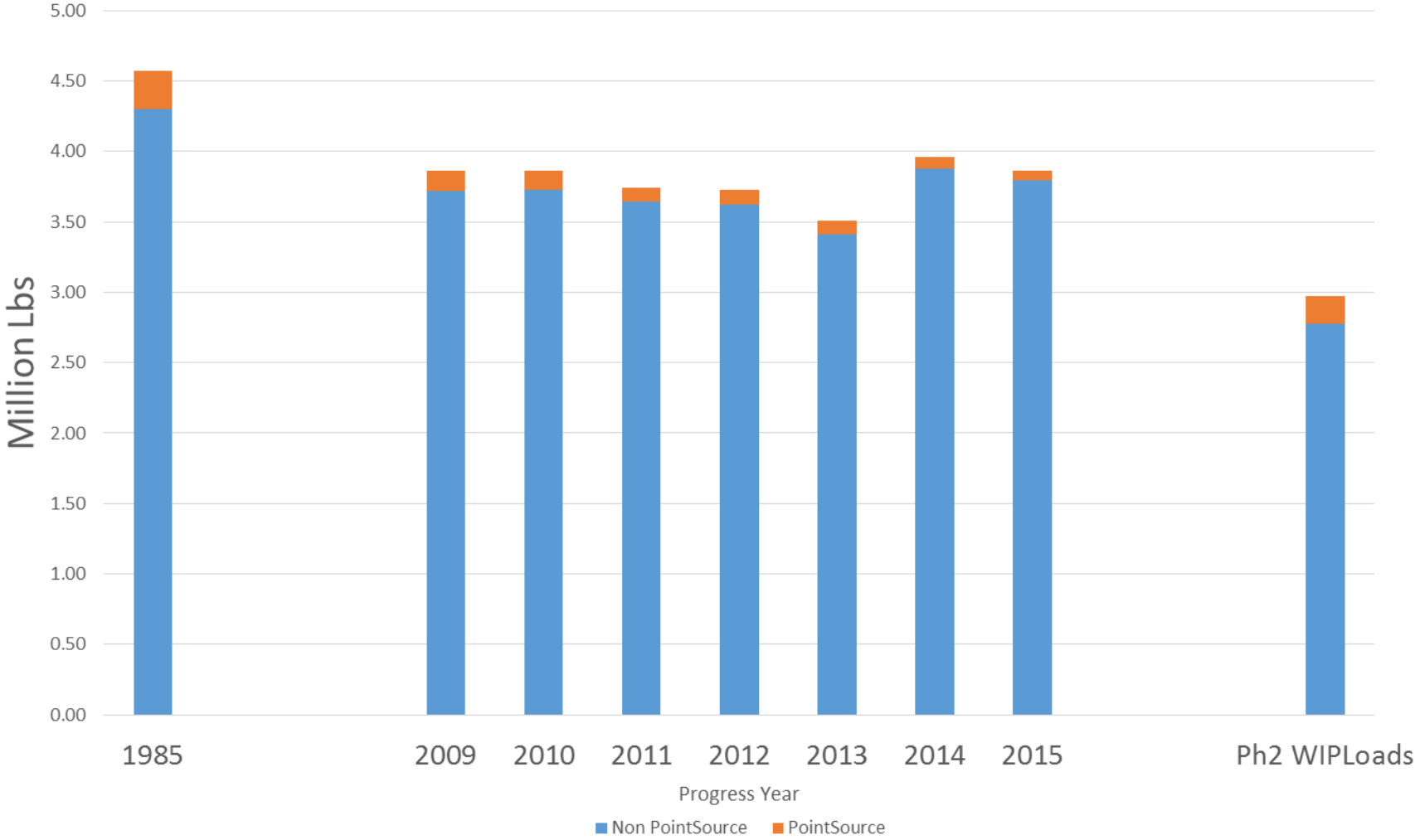
Choptank River Watershed Estimated and Monitored Annual Phosphorus Loading Trends



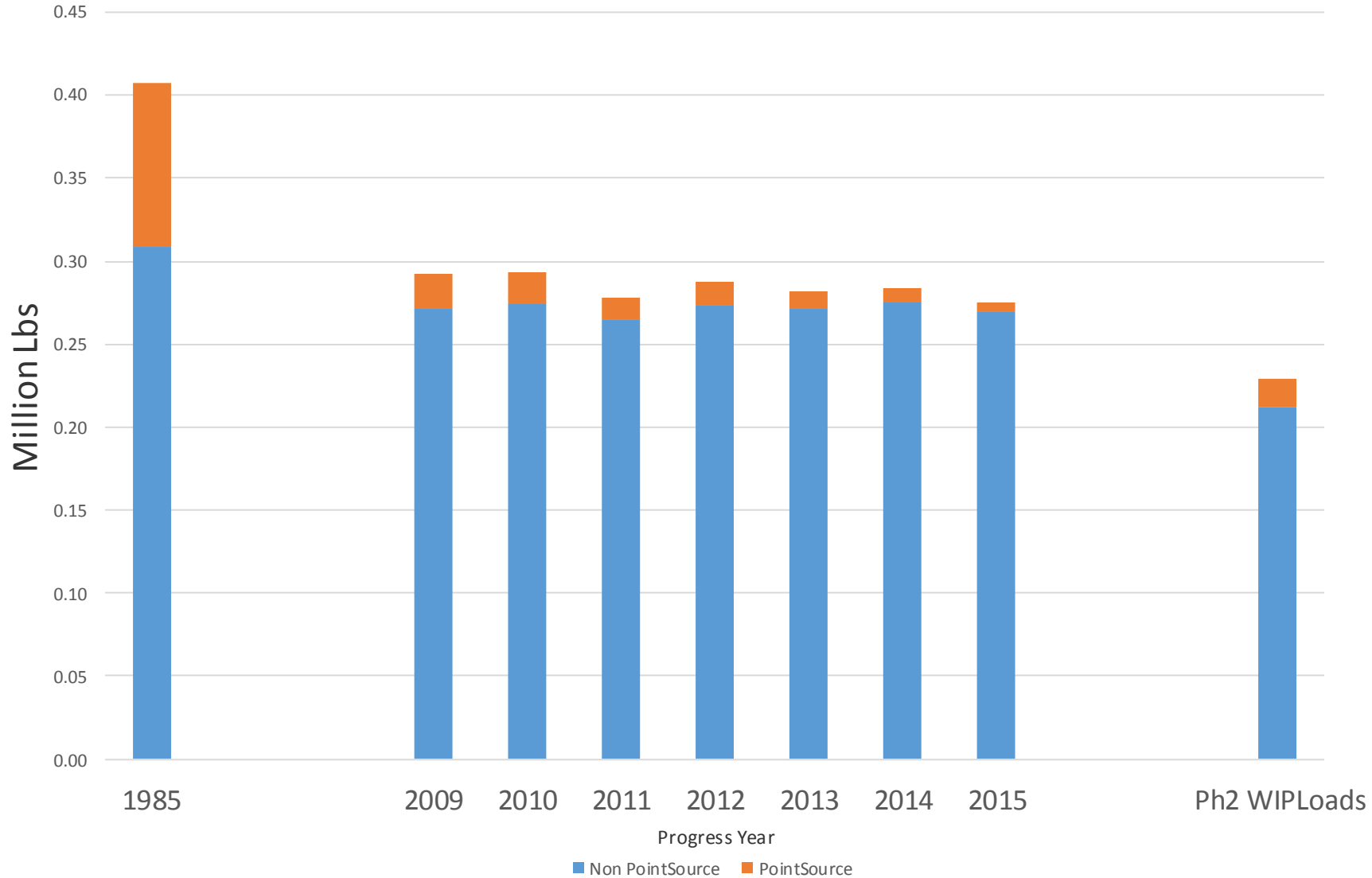
Choptank River Watershed Estimated and Monitored Annual Suspended Sediments Loading Trends



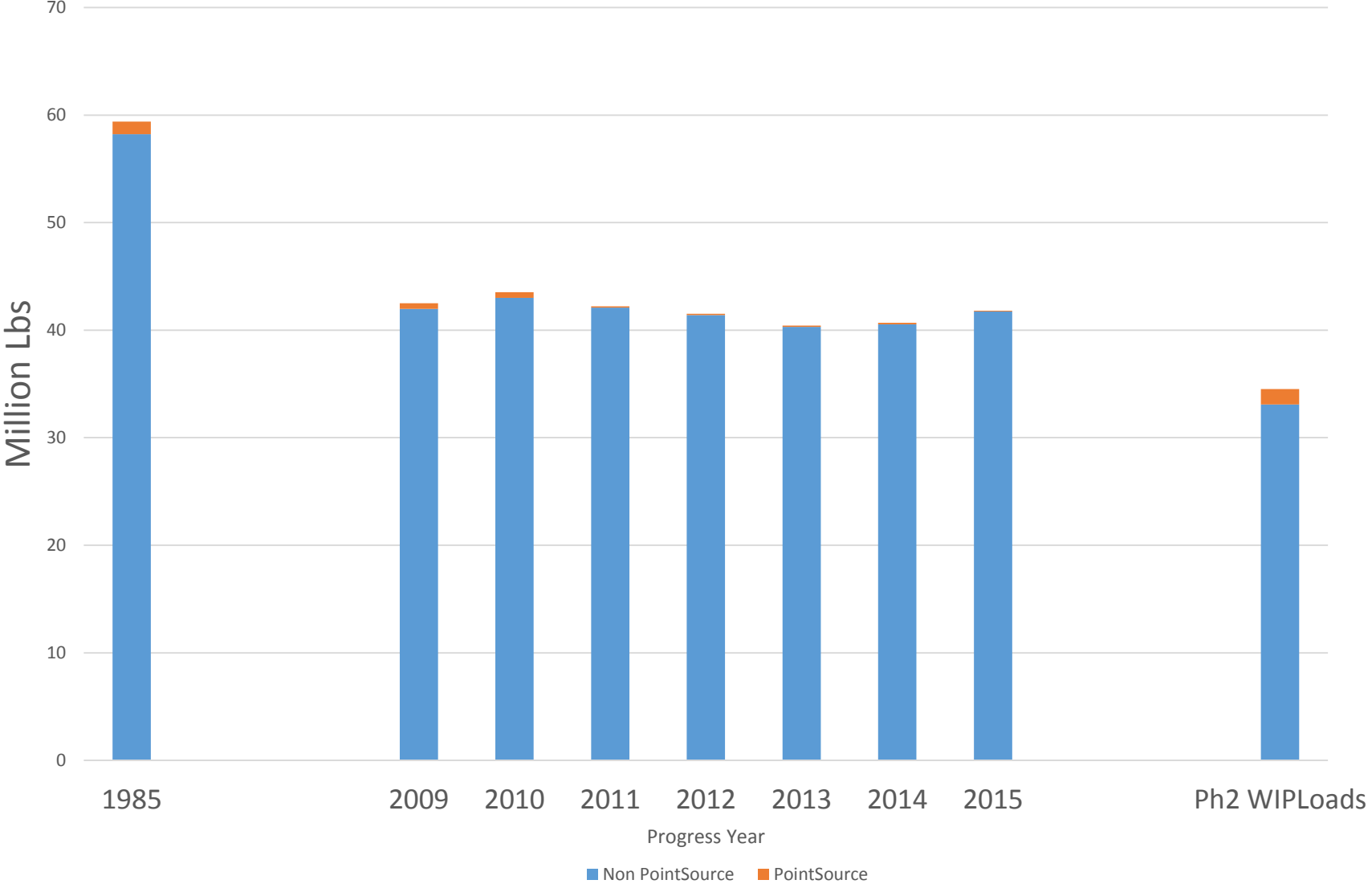
Phase 5.3.2 Chesapeake Bay Watershed Model Estimated Nitrogen Loads Delivered to the Tidal Choptank River



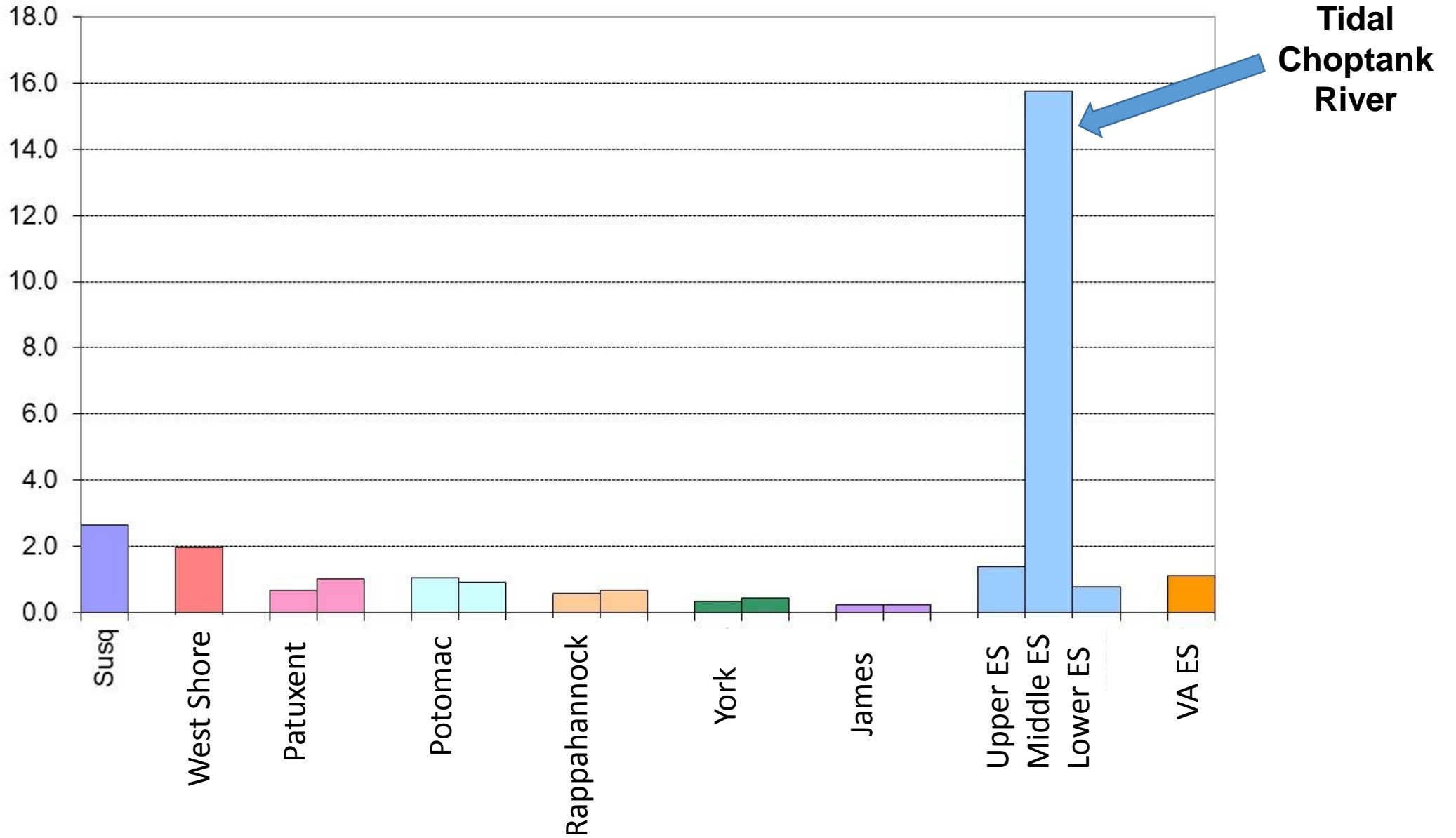
Phase 5.3.2 Chesapeake Bay Watershed Model Estimated Phosphorus Loads Delivered to the Tidal Choptank River



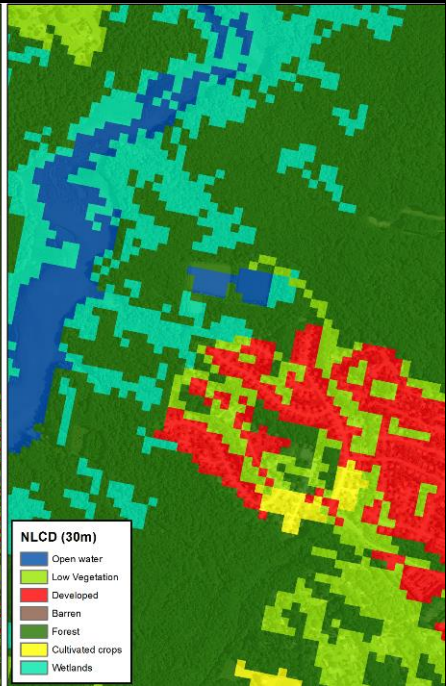
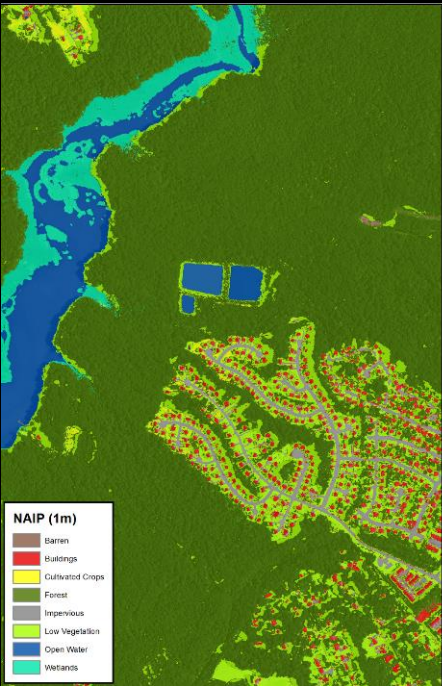
Phase 5.3.2 Chesapeake Bay Watershed Model Estimated Sediment Loads Delivered to the Tidal Choptank River



Relative Influence on Tidal Choptank River Water Quality from Nitrogen Loads from Each the Nine Major River Basins



Chesapeake Bay Watershed Land Cover Data: Phase 5 vs. Phase 6



Urban/Suburban Settings



Rural Settings

Phase 6 Watershed Model Structure



Average Load + Δ Inputs * Sensitivity

*

Land Use Acres

*

BMPs

*

Land to Water

*

Stream Delivery

*

River Delivery

Direct Loads

Rich Batiuk
Associate Director for Science
U.S. EPA Chesapeake Bay Program Office

410-267-5731 Work

443-223-7823 Mobile

batiuk.richard@epa.gov

www.chesapeakebay.net

www.epa.gov/chesapeakebaytmdl

