



Local Affairs and Economic Development Directors Meeting

Erie, Pennsylvania • December 5-6, 2012




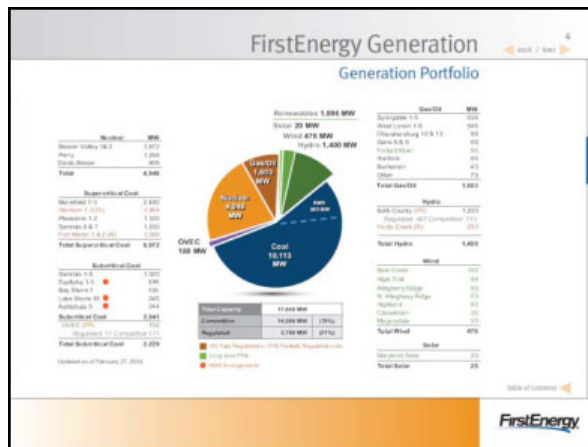
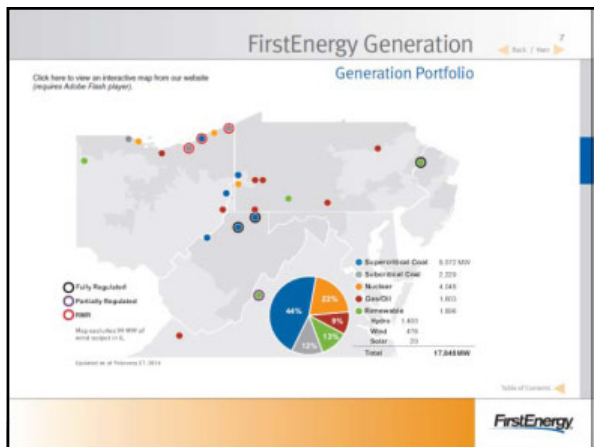
2014 Western Maryland Local Government Exchange
The Changing Face of Energy in Western Maryland

John Emerick – Manager, External Affairs




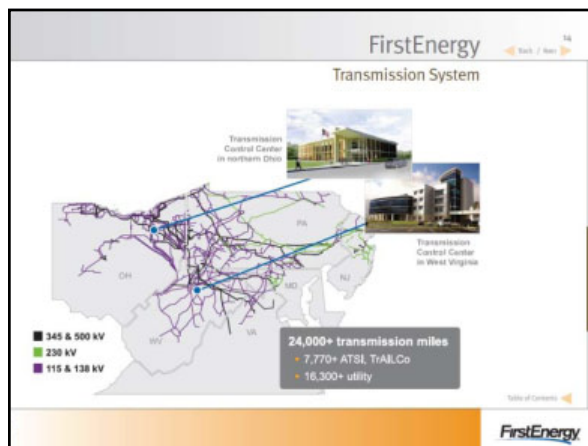
FirstEnergy Facts at a Glance

- Six million customers
- Nearly 18,000 megawatts of generating capacity
- Operations in six states
- 65,000 square miles of service territory
- 20,000 miles of high-voltage transmission lines
- \$50 billion in assets
- \$15 billion in annual revenues
- 16,500 employees

FirstEnergy Nuclear Operating Company (FENOC)

- A subsidiary of FirstEnergy Corp., operates the corporation's three nuclear power facilities:
 - the two-unit Beaver Valley Nuclear Power Station in Shippingport, Pennsylvania;
 - the Davis-Besse Nuclear Power Station in Oak Harbor, Ohio;
 - the Perry Nuclear Power Plant in Perry, Ohio.
- Together, these facilities produce nearly 4,000 megawatts of electricity – nearly a fourth of our company's generating capacity (approx. 18,000 MW).
- FENOC is committed to safe, reliable and secure operations of our nuclear plants.
- FENOC has also coordinated with local, state and federal agencies to establish emergency procedures for protecting the health and safety of the public. These plans have passed rigorous standards set by the Nuclear Regulatory Commission and are tested regularly.
- Our overriding goal is to continue the safe, reliable and efficient operations of our plants to provide the power needed by communities and customers.

Local Affairs and Economic Development Directors Meeting

Erie, Pennsylvania • December 5-6, 2012

